

Eden Research Laboratory

To: BioAqua Life

Date: November 23, 2024

From: Thomas Poth

Number of pages including cover: 2

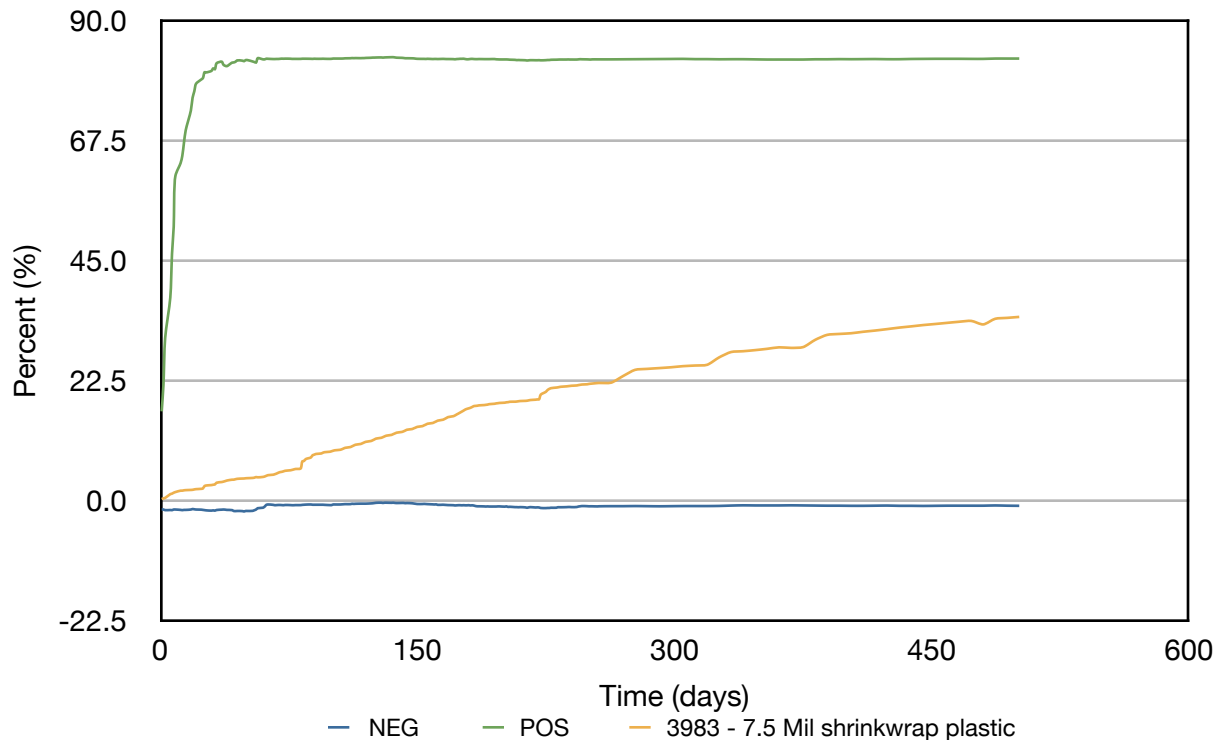
Regarding: ASTM D5511 study update for samples - 501 days

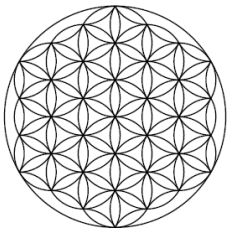
Update

	Inoculum	Negative	Positive	3983 - 7.5 Mil shrinkwrap plastic
Cumulative Gas Volume (mL)	2372.3	2316.7	10860.3	13332.8
Percent CH ₄ (%)	43.4	42.4	31.4	50.6
Volume CH ₄ (mL)	1030.0	982.2	3404.8	6752.5
Mass CH ₄ (g)	0.74	0.70	2.43	4.82
Percent CO ₂ (%)	40.3	37.8	47.1	36.9
Volume CO ₂ (mL)	956.6	874.8	5120.5	4919.8
Mass CO ₂ (g)	1.88	1.72	10.06	9.66
Sample Mass (g)	10	10	10	20.0
Theoretical Sample Mass (g)	0.0	8.6	4.2	15.0
Biodegraded Mass (g)	1.06	0.99	4.57	6.25
Percent Biodegraded (%)		-0.8	83.0	34.6
* Adjusted Percent Biodegraded (%)		-1.0	100.0	41.7

* Outside of the ASTM D5511 method and on the assumption that the positive control (Cellulose) will fully biodegrade, all value have been proportionally adjusted.

Biodegradation





Eden Research Laboratory

Update

2111 Menaul NE, Suite A
Albuquerque, NM 87107
T 505.508.3994
M 505.550.9316
thomas.poth@edenresearchlab.com

Biodegradation

